



Source Technologi

Our Source. Your Resource

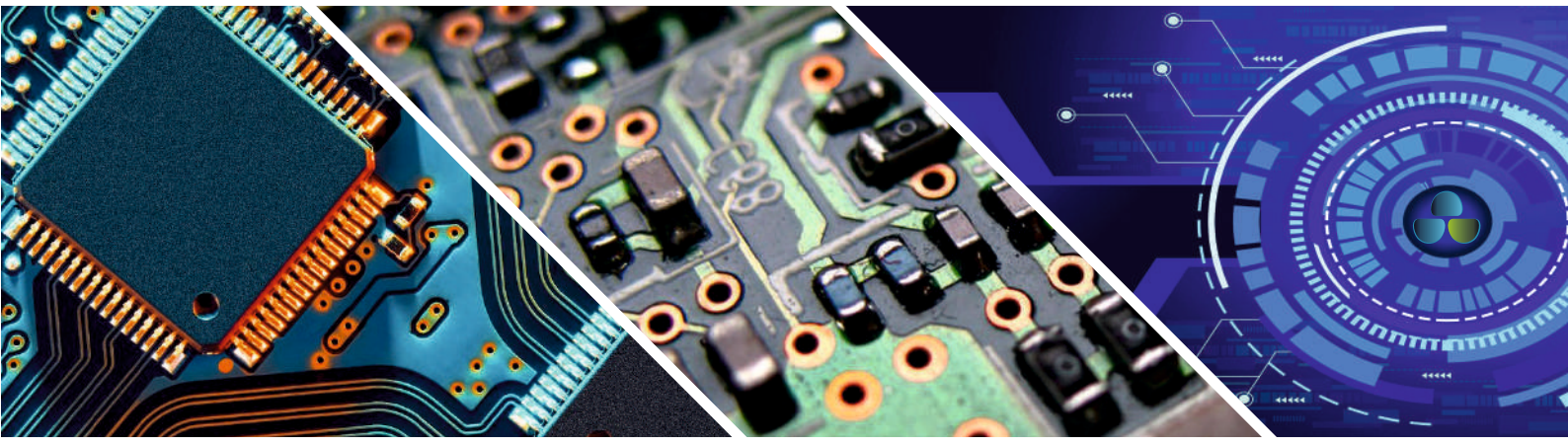
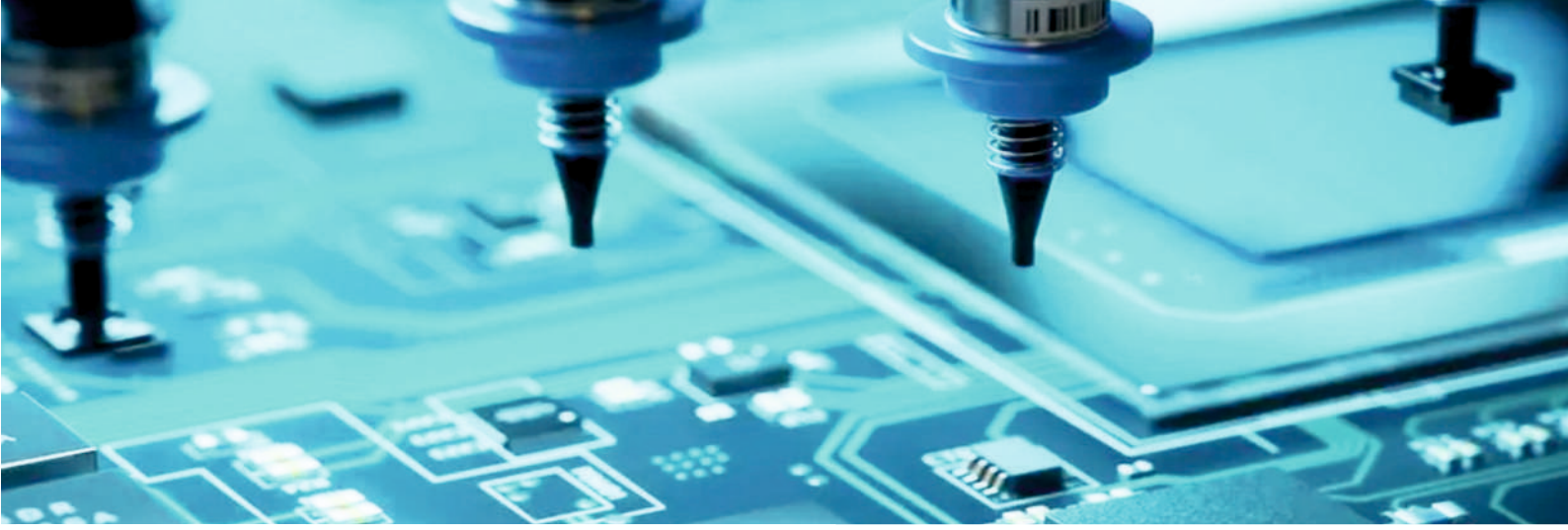
Est.2004

ISO 9001:2015 Certified



*Sourcing Electronic
Components
From Anywhere
In the World Is At Your
**FINGERTIPS
NOW!***

www.sourcetechnologi.in



Source Technologi having expertise in kitting and consolidation for complete range of components supplying to all Customers in which we had accomplished this task, further validates our commitment to Quality, Continual Improvement and our commitment to Customer Satisfaction.

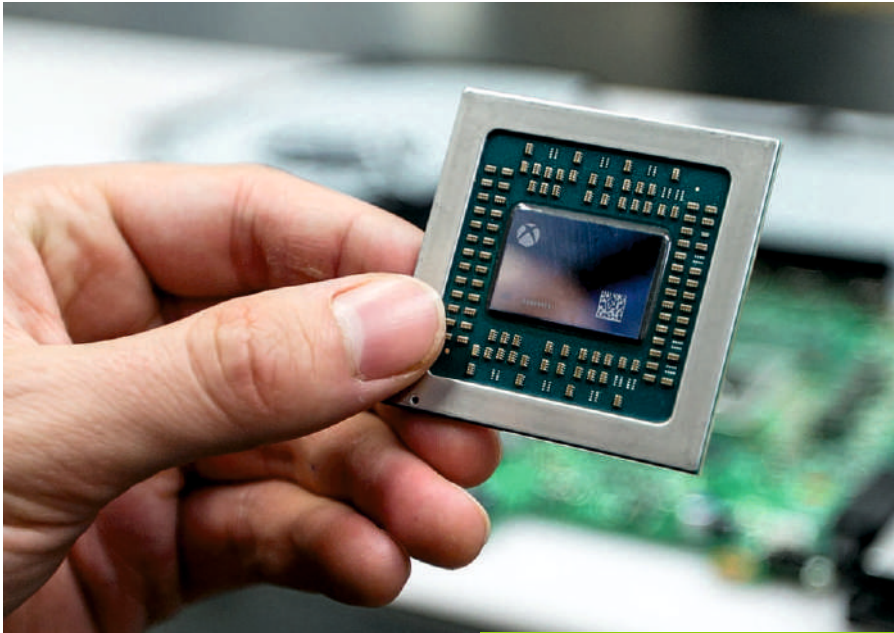
Our Vision

Our Vision is to be a Leader in providing best Support, quality and services for the categories like Telecommunications, Aero Space, Medical, Defence, Automotive, Railways, Consumer electronics, etc.

Our Policy

Source Technologi Achieves A Highest Quality Standard, Source Technologi, is excited to announce our recent advances in Quality as we have upgraded our Quality Management System.

Customer Focus



Source Technologi primary focus is on customer satisfaction. We appreciate all customer feed back, as we recognize it to be a major tool of continual improvement.

Quality Policy

We are committed to deliver cost effective as well as highly efficient products and services, to accomplish Customer Delight, by continuously appraising our suppliers on Industry demands and expectations.

We continuously improve our systems / processes by imparting required skills to our employees, and also by involving our partners and Suppliers.

Our policy will be achieved by:

- Maintaining a LARGE STOCK of components, available for on-time delivery / Ex-stock.
- Providing a QUICK RESPONSE to all enquiry, orders and customer requests.
- Employing SMART PEOPLE who are trained in their field and equipped with the proper tools.
- Conducting businesses with the highest moral, ethical and legal standards.

We maintain strict ESD, Temperature & Humidity Standards at our facilities. Our Entire location feature ESD Static dissipative flooring and ESD workstations in our inspection and warehouse areas. Our team member's also undergo Periodical ESD awareness training All Parts undergo a rigorous verification and documentation process. These Procedures ensure that our customers only receive Genuine and Functional Electronic Components



We use this Storage Reel Rack stationary material handling solutions, which enables to locate parts in few seconds and achieve some of the below Benefits



- Over 90% operator reductions in pulling kits and returning parts
- Over 90% space reduction for storing SMT parts and kits
- Reduces operator travel time by 60%
- Drastically enhances inventory accuracy without counting parts
- Substantially reduce operator errors
- One operator can transact over 3000 reels in an 8 hour shift
- Traceability to all Transactions

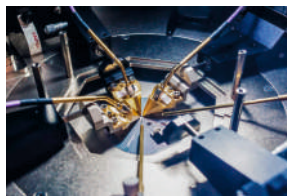
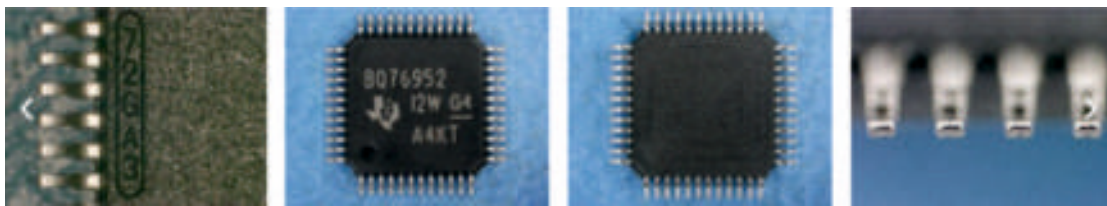
Visual Inspection



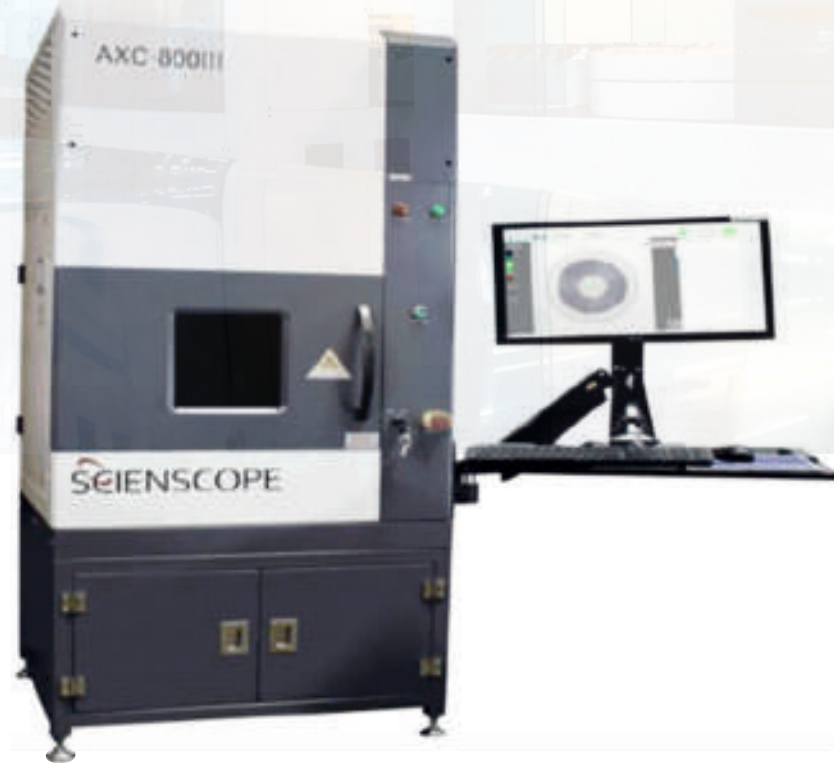
Visual Inspection is a term used for inspecting electronic components under a microscope to determine if a device has been altered from its original state. During this process, a device may show signs of non-conformance or inconsistencies that help determine if a device has been used or if a device is new and original. This process is normally performed by a Components Test Lab or Test House for short External Visual Inspection is non-destructive. External Visual Inspection, if properly performed, can lead to a high capture rate of the suspect or fraudulent/counterfeit parts.

A good deal of fraudulent/counterfeits are parts that have been recycled; i.e., taken off boards or assemblies and reworked in the form of straightening and re-tinning the leads, remarking by sanding off the original marking, and/or blacktopping to hide the sanding marks and then remarking.

Peek of what we do in the visual test



High-Resolution Barcode Camera System



This Reel Smart Lite high-resolution barcode camera system with an image-based algorithm reads any barcode, even with defects. The Reel Smart Lite will help automate the incoming process and make the relabeling process safe and easy, helping minimize human error.

Features

- MES and ERP integration
- Fast receiving cycle time
- Optimize operator workload
- Automatic data entry in ERP
- Full traceability with UID relabeling
- New label double-check mode with dual-sided label camera
- Integrated OCR



TOYOTA TSUSHO NEXTY India

Feature of TOYOTA TSUSHO NEXTY Electronics India

■ No.1 Japanese Semiconductors Distributor in India

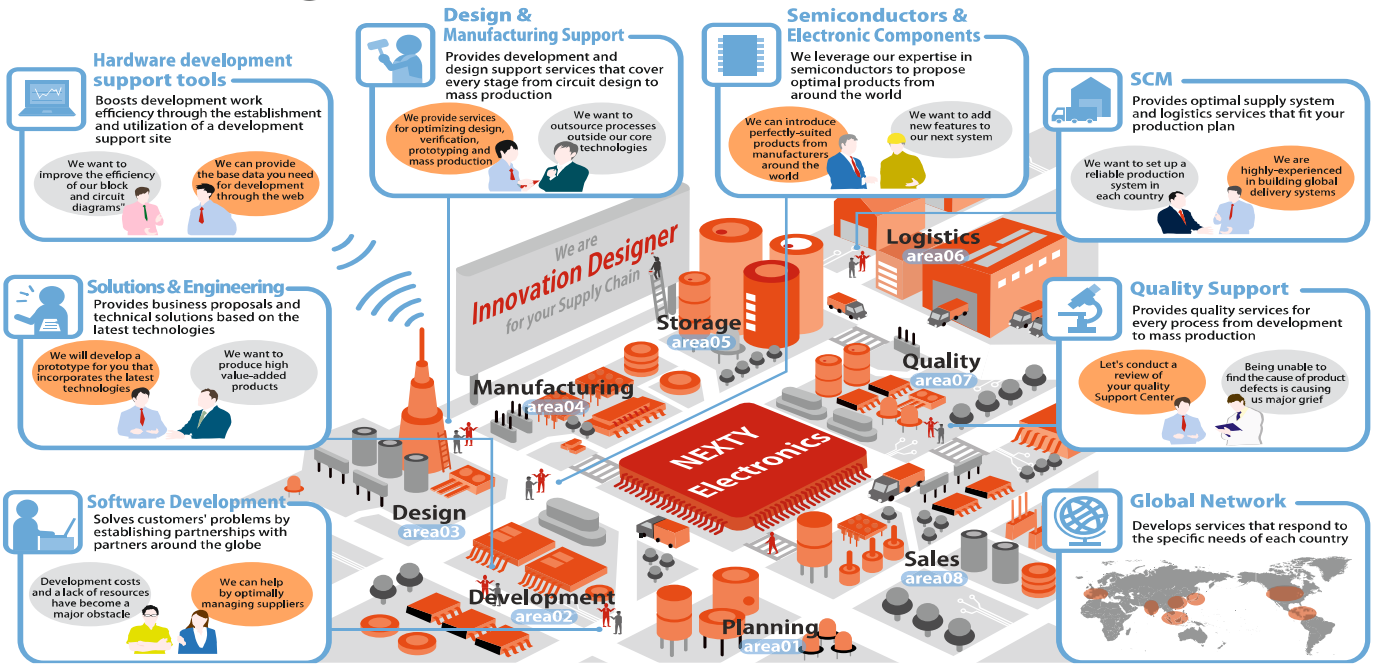
■ High Level of Technical Support /Development

- a) Dedicated development team (Tech center)
- b) High level of technical support (FAE team)

■ Corporate Information

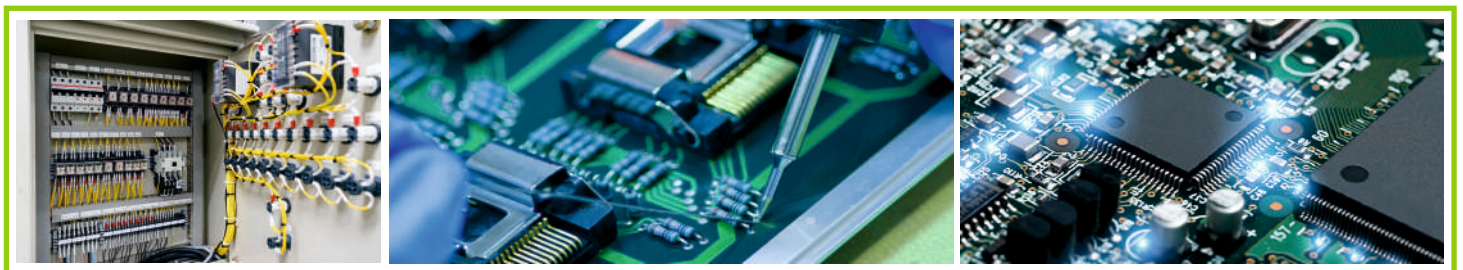
- Head Office Noida, UP
- Locations Mumbai, Bangalore, Pune
- Employees 70 (as of Aug 2023)

Innovation Designer Functions



NEXTY India Major Line Card

ABOV Semiconductor	NDK
AMS-Osram Opto Semiconductors	NICHICON CORPORATION
Bel Fuse	Nippon Chemi-Con Corporation
BOE Varitronix	NISSINBO MICRO DEVICES
FOXCONN	Panasonic Corporation
HOKURIKU ELECTRIC INDUSTRY	ROHM Semiconductor
Holtek Semiconductor	Sanken Electric
Infineon Technologies	Shindengen Electric Manufacturing
INPAQ Technology	STMicroelectronics
IRISO Electronics	Taiyo Yuden
J.S.T.MFG	TATEYAMA KAGAKU
KOA CORPORATION	TDK CORPORATION
KYOCERA Corporation	TE Connectivity
Meiko Electronics	TOSHIBA CORPORATION
Mitsubishi Electric Corporation	u-blox
Murata Manufacturing	Vishay Intertechnology



Authorized Distributors



Viking Tech was established in October 1997 at Hsin-Chu Science-Based Industrial Park, Taiwan, as the leader in the design, manufacturing and marketing of Thin- Film / Thick-Film integrated passive devices and discrete passive components.



JetronicsIndia established in 1985, had started manufacturing simple connectors like Aerospace Connectors, PCB card edge connectors, UHF connectors etc. Circular Connectors, Ms Connectors, Military Connectors, Mil 5015 Connectors, Circular Threaded connectors in both threaded and reverse Bayonet types.



XFMRS, Inc is singularly driven to provide magnetic components on a worldwide basis at a world class level of service. We are proud to offer 100% on time delivery! You can be sure that when working with us you receive the most competitive pricing and access to the latest products in the industry. We are committed to excellence at all levels and in all aspects of our organization!

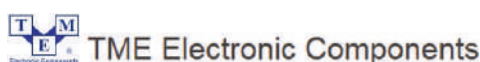


BeRex includes multiple fabless RF and Microwave Integrated Circuit companies, each with diverse products that serve multiple markets. BeRex Corp. headquartered in Seoul, South Korea designs, develops, manufactures, and markets: Packaged GaAs, SiGe and RF SOI and Bare-die, for Wireless Communications Systems and Radar in Commercial and Military Markets

Channel Partner



Consolidations From The Below Distributors



*We Are Independent
Stocking Distributor For The
Following OEM's*

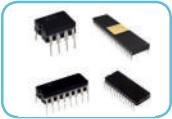
				
				
				
				
				
				
				
				
				
				
				

All product names and brandnames are the registered properties of the respective companies

Products

Active Components

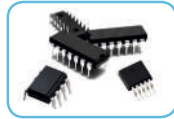
Components used in circuits that are not a source of power. Items that fall into this grouping of parts include devices for storing electrical charge, controlling and limiting the flow of current, protecting other components, removing unwanted frequencies, and more.



IC DIP



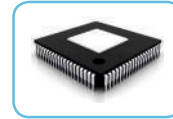
IC Regulators & Controls



IC CHIPS



Integrated-circuit



Microcontrollers



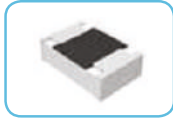
Processor and Microprocessor

Components used in circuits that are not a source of power. Items that fall into this grouping of parts include devices for storing electrical charge, controlling and limiting the flow of current, protecting other components, removing unwanted frequencies, and more.

Passives



Automotive High Voltage Capacitor



Automotive Series Resistor



Tantalum Capacitors



Electrolyte capacitors



Super Low ESR, Surface Mount Capacitors



Tantalum Polymer Capacitors

Semiconductors, Development Tools

Devices that contains multiple elements and can provide many functions. These devices are built with materials that have an electrical conductivity that falls between the conductivity of a conductor and an insulator.



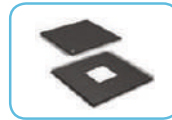
Clock, Timing



Data Acquisition Devices



Discrete Semiconductor



Embedded



Embedded Computer



Interface

Devices used to emit, modulate, sense, transform, or transmit visible and non-visible wavelengths.

Optoelectronics



Display Module



Fiber Optic



Infrared Emitter



Integrated LED Module



Lamps



Laser Diode

Electromechanical

Devices that use a physical (non electrical) component to start or complete an electrical circuit or devices that produce a physical (non electrical) forces or signals that are used outside of the circuit.



Audio Product



Motors, Solenoids, Driver Board



Relay



Switch



Pushbutton Switch



Toggle Switch

Batteries



Products

Power, Circuit Protection

Devices designed to provide power to components and equipment or to protect components and equipment from excessive current, excessive voltage, unwanted signals, etc.



Power Supply



Circuit Protection



Filter



Transformer



Line Protection



Crystals and Oscillator

Devices that are designed to be used within specific frequency ranges.

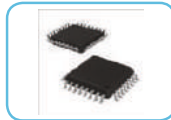
RF, Wireless



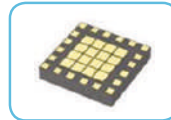
RF Antenna



RF Finished Unit



RF Receivers,
Transceivers, Transmitter



RF, IF



RFI and EMI -
Shielding & Absorbing



RFID

Interconnect, Wire & Connectors

Devices that provide electrical connections between unlinked portions of an electrical circuit/device.



Cable Assembly



Cable, Wire



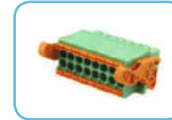
Connectors



Connectors



Heat Shrink



Connectors

Devices that detect and respond to changes in a property.

Sensors



Optical



Temperature



Inertia



Magnetic



Pressure



Area

Thermal Products

Devices that are used to provide cooling to electrical and electronic components.



DC Fans



AC Fans



Finger Guards
and Filter



Pads, Sheet



Adhesives, Epoxies,
Greases, Paste



Thermoelectric, Peltier
Assembly

Tools Products

Crimping Tools, Microscopes, Tweezers, Solder Gun - Paste & all Accessories of hand Tools.





Services

- More than 145000 varieties of Components EX STOCK.
- Components with TRACEABILITY / Batch code and Date Code.
- Manufacture / Distributor COC.
- Maximum Support within 24 months Components Date code.
- Support for MIL GRADE / AUTOMOTIVE GRADE / COMMERCIAL GRADE / INDUSTRIAL GRADE.
- Kitting facilities from Design to Production Volumes
- 3700 Sqft. Storing Area Complete ESD.



Source Technologi

Our Source. Your Resource
Est.2004

Source Technologi

VTH Source components Private Limited
727, 21st Main, 12th Cross, J.P. Nagar 2nd Phase,
Bangalore-560 078. Karnataka, India.

- Ph: +91-80-26571838, 26576657, 26561167,
- E-mail: sourceblr@sourcetechnologi.in / sourceblr@sourcetechnologi.com
- Website: www.sourcetechnologi.in